

OpenEdge Architect Template Customization

*“Progress Development Studio for OpenEdge®”
in OpenEdge 11*

***Mike Fechner, Director, Consultingwerk Ltd.
mike.fechner@consultingwerk.de***

Mike Fechner, Consultingwerk Ltd.

- Independent IT consulting organization
- Focusing on OpenEdge and .NET
- Located in Cologne, Germany
- Customers in Germany, EMEA, USA
- Vendor of tools and consulting programs (specialized on GUI for .NET, Modernization)
- 23 years of Progress experience (V5 ... V11.2)
- Passionate OpenEdge Architect user since 10.1A
- But I'm not a Java programmer...

OpenEdge® application modernization solutions

- WinKit
- **SmartComponent Library**
- Dynamics4.NET
- Tools can be used together or separately
- Shared common code base
- SmartComponents.Mobile
- SmartComponents.Web
- SmartBPMAdapter for OpenEdge BPM/Savvion

Agenda

- A (short) Review of OpenEdge Architect
- (Personal) Preferences in OpenEdge Architect
- OpenEdge Editor Macros
- Setting the Author Name used by Templates
- Progress Customization Options
- JET Templates
- Installing Plugins for JET in OEA/PDSOE
- Customizing OpenEdge Architect Templates

OpenEdge Architect

- Eclipse based, extensible
- Available since 10.1A (continuously enhanced since then)
- Alternative to the AppBuilder / OpenEdge Studio
- Requires a separate license (included in PSDN SDK), parallel installation possible
- AppBuilder, ADM1/2 and Dynamics integrated
- Extensible using 3rd party plug-ins (commercial or community based)
- Windows only

Reasons to migrate to OpenEdge Architect

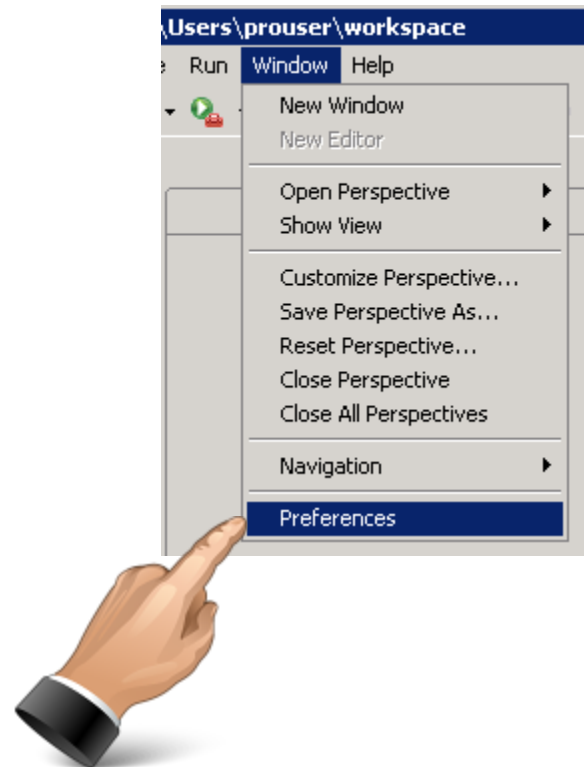
- GUI for .NET
 - Visual Designer, Class Browser
- object-oriented coding
 - no class template in AppBuilder, class browser
- AppServer Development (10.2B, 11.x)
- OE Mobile
- REST Adapter
- OpenEdge BPM

Agenda

- A (short) Review of OpenEdge Architect
- (Personal) Preferences in OpenEdge Architect
- OpenEdge Editor Macros
- Setting the Author Name used by Templates
- Progress Customization Options
- JET Templates
- Installing Plugins for JET in OEA/PDSOE
- Customizing OpenEdge Architect Templates

Workspace preferences in OEA

- Main menu-bar, Window -> Preferences



Workspace preferences in OEA

- General – Editors – Text Editors
 - Insert spaces for Tabs, Tab width, show line numbers, ...
- General – Search
 - Reuse editors ... turned off
- OpenEdge Architect – Editor
 - As you type: Case (upper or lower), case keywords, depending on your style: expand keywords

Workspace preferences in OEA

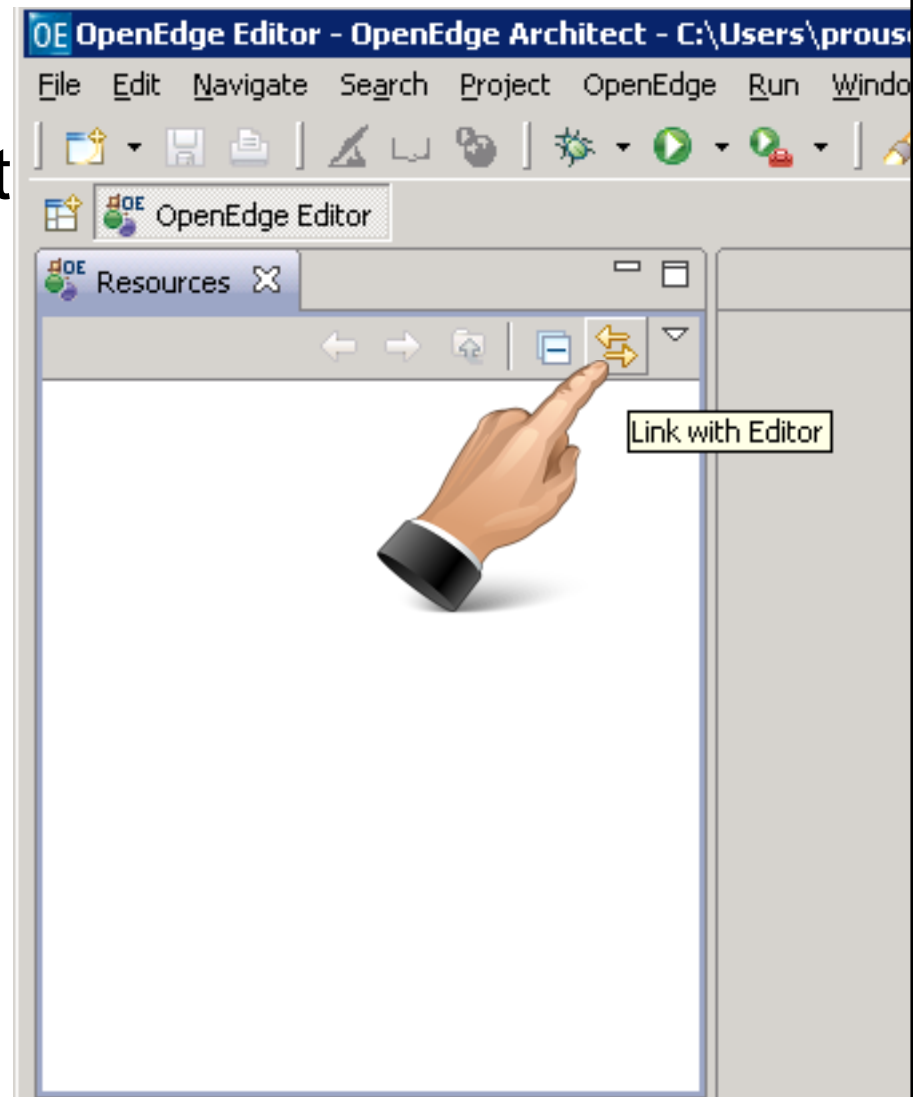
- General – Workspace
 - Refresh automatically (on fast machines, local source code)
- Refreshing causes Eclipse to permanently search the file system for new, deleted, modified files
- Sync's Eclipse's view of the world to the file system
- May cause recompile
- Files not in sync will be skipped on compile, search, etc... ☹
- Alternative is manual refresh (e.g. F5 key)

Workspace preferences in OEA

- OpenEdge Architect – Editor – Build
 - Auto check syntax (while typing)
 - Maximum number of errors reported per build: much higher than 100 (e.g. 100,000) when you have
 - templates or scratch files
 - migration routines that typically never compile
 - just never cleaned up source code (Copy of test.p, test_backup.p)

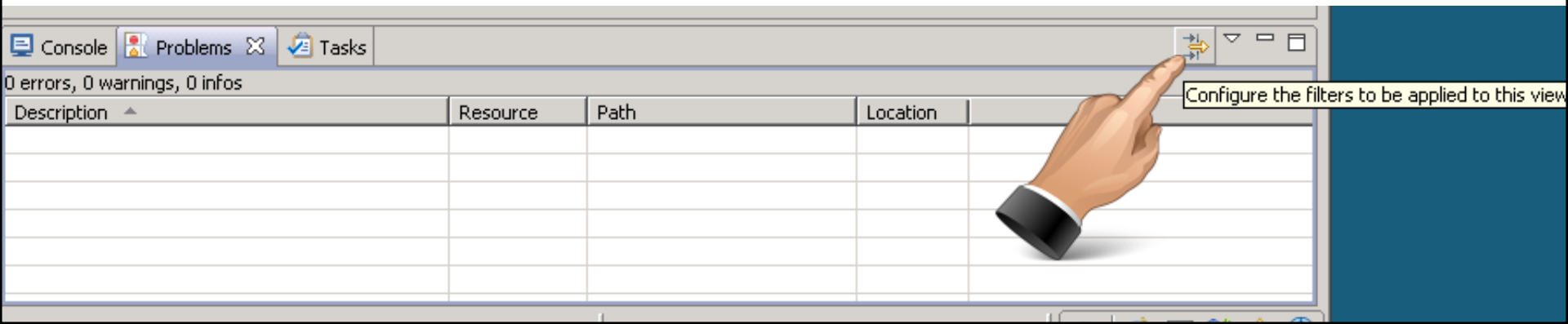
Link with Editor (Resource view)

- Keeps resource view (file browser) and current editor in sync when switching editor tabs



Error filters

- Use error filters dialog to configure filters
 - default (show all) usually not helpful on large projects
 - my preference is ‘selected element and its children’
 - or use working sets



Agenda

- A (short) Review of OpenEdge Architect
- (Personal) Preferences in OpenEdge Architect
- **OpenEdge Editor Macros**
 - Setting the Author Name used by Templates
 - Progress Customization Options
 - JET Templates
 - Installing Plugins for JET in OEA/PDSOE
 - Customizing OpenEdge Architect Templates

OpenEdge Editor Macros

- Defined in the Workspace Preferences
- Progress OpenEdge → Editor → Templates (Macros)
- Macros can be inserted automatically when you type the name followed by the space key
- Macros may also require the content assist dialog (CTRL-SPACE)

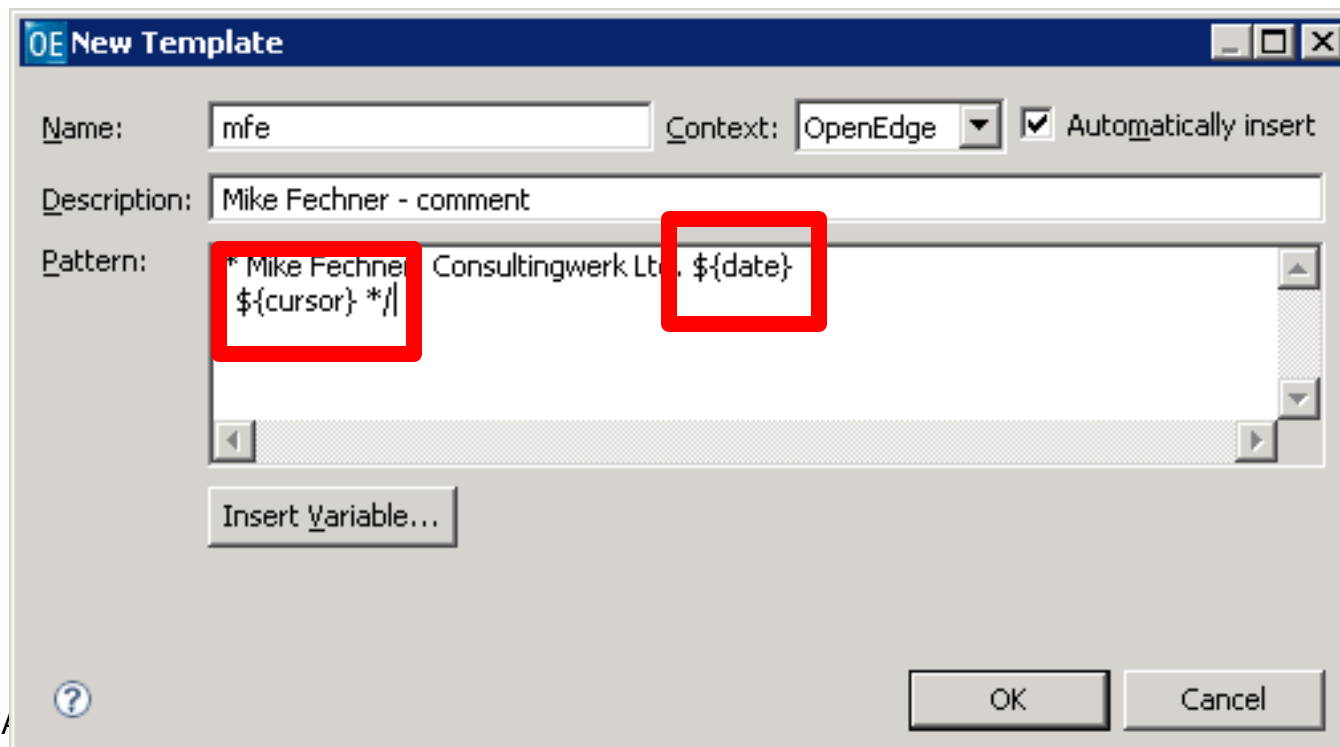
OpenEdge Editor Macros

- Progress preinstalls a set of Macros
- DVCH: DEFINE VARIABLE AS CHARACTER
- MES: MESSAGE VIEW-AS ALERT-BOX
- &FR {&FRAME-NAME}
- ...

- MES Macro requires some polishing...

OpenEdge Editor Macros

- Macros may contain variables that will be replaced when inserted to the editor
- `#{cursor}` defines where the cursor should remain



Macro variables

cursor - The cursor position after editing template variables

date - Current date

dollar - The dollar symbol

line_selection - The selected lines

time - Current time

user - User name

word_selection - The selected word

year - Current year

Edit Template

Name: Context: Automatically insert

Description:

```
Pattern:
/*-----
Purpose: Raised ${cursor}
Notes:
@param sender The object that raised the ${event} event
@param e The ${eventargs} with the data for the event
-----*/
DEFINE PUBLIC EVENT ${event} SIGNATURE VOID (sender AS ProgressingObject,
e AS ${eventargs}).

/*-----
Purpose: Raises the ${event}
Notes:
@param e The ${eventargs} with the data for the event
-----*/
METHOD PROTECTED VOID On${event} (e AS ${eventargs}):

/* Consultingwerk.Assertion.EventArgsAssert:IsValid (e, "${event}";U) . */

IF NOT VALID-OBJECT (e) THEN
    e = Consultingwerk.EventArgs.Empty .

THIS-OBJECT: ${event}:Publish (THIS-OBJECT, e) .

END METHOD .
```

Custom Variable



Exporting and Importing Macros

- Macros are stored in the workspace metadata
- Exporting and importing allows reusing in different workspaces and sharing with other people
- Import and Export Buttons in the Macro Dialog

Agenda

- A (short) Review of OpenEdge Architect
- (Personal) Preferences in OpenEdge Architect
- OpenEdge Editor Macros
- **Setting the Author Name used by Templates**
- Progress Customization Options
- JET Templates
- Installing Plugins for JET in OEA/PDSOE
- Customizing OpenEdge Architect Templates

Setting the Author name for Templates

- Some of the Templates and Wizards use the **windows login name** as the Author reference
 - Mike
 - mikefe
 - fec878
 - Administrator
 - Progress

Setting the Author name for Templates

- Use vmargs **-Duser.name Startup parameter** to override this
- <http://blog.consultingwerk.de/consultingwerkblog/2011/08/customizing-openedge-architect-templates-made-easy-personalization/>

```
C:\Progress\OpenEdge102B\oeide\eclipse
e\eclipse.exe -showlocation -vm
"C:\Progress\OpenEdge102B\jre\bin\jav
aw.exe" -vmargs -Duser.name="Mike
Fechner / Consultingwerk Ltd."
```

Setting the Author name for Templates

OE New ABL Procedure

Create an ABL procedure file
Specify a name for the procedure file.

Container: \ABL_Trunk

File name: custom.p

Description:

Purpose:

Author: Mike Fechner / Consultingwerk Ltd.

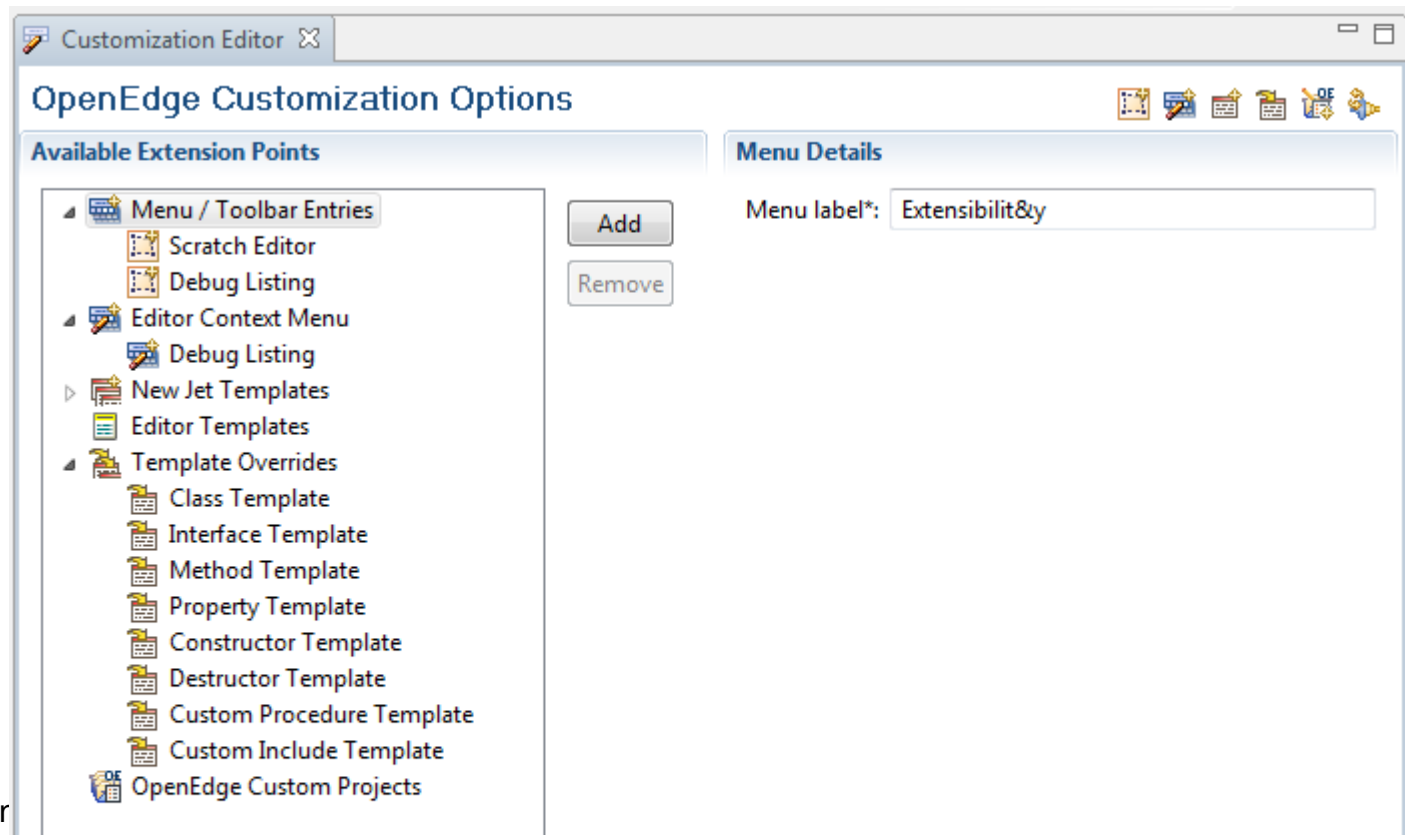
Add routine-level error handling

Agenda

- A (short) Review of OpenEdge Architect
- (Personal) Preferences in OpenEdge Architect
- OpenEdge Editor Macros
- Setting the Author Name used by Templates
- **Progress Customization Options**
 - JET Templates
 - Installing Plugins for JET in OEA/PDSOE
 - Customizing OpenEdge Architect Templates

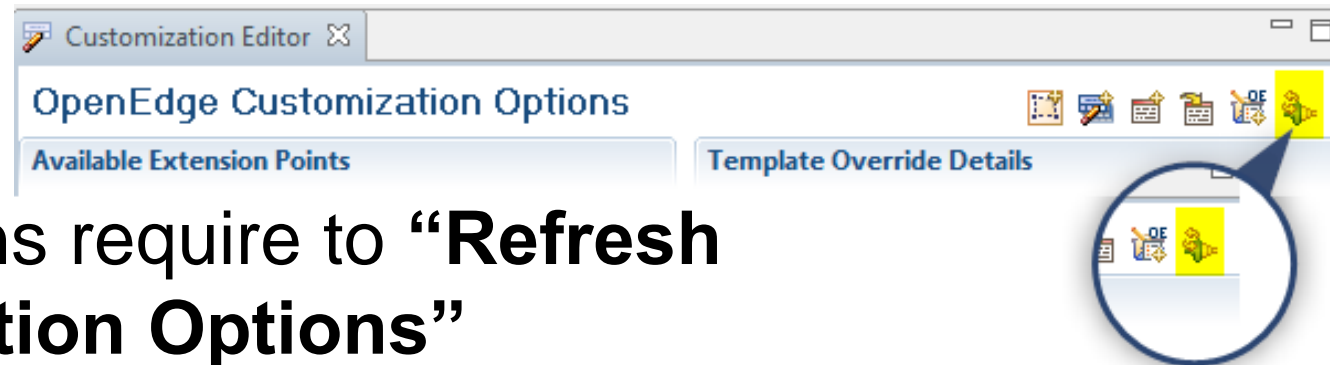
Progress Customization Editor

- In the OpenEdge Editor Perspective
- OpenEdge -> Tools -> Customization Editor



Progress Customization Editor

- ProTools for PDSOE:
 - Menu / Toolbar Entries, Editor Context Menu
- Template Overrides
- Custom Project Templates



- Modifications require to **“Refresh Customization Options”**
- When prompted for resetting the perspective, choose no!

Opening files form ABL code

- Useful for Menu / Toolbar Entries and Editor Context Menu
- Public API's defined in `adecomm/oeideservice.i`
- Supports querying basic project properties, opening views for ABL windows (like `OEUnit` does) and opening files
- `getProjectName ()`
- `openEditor ()`

Sample Open Debug Listing

debug-list.p Customization Editor

OpenEdge Customization Options

Available Extension Points

- Menu / Toolbar Entries
 - Debug Listing**
- Editor Context Menu
- New Templates
- Template Overrides

Add Remove

Action Details

Name*: Debug Listing

Accelerator:

Icon: icons/oelogo16.gif Browse...

Tooltip:

Program name*: Consultingwerk/Studio/DebugList/debug-list.p Browse...

Parameters:

Configuration: Send file name of the current selection

Show on menu Show on toolbar Show on menu and toolbar

Run persistent

Plugin Details

Version*: 1.0.0

Main

Sample Open Debug Listing

```

ROUTINE-LEVEL ON ERROR UNDO, THROW.

DEFINE INPUT  PARAMETER pcFileName AS CHARACTER NO-UNDO.

{adecomm/oeideservice.i}

/* ***** Main Block ***** */

DEFINE VARIABLE cFileName AS CHARACTER          NO-UNDO .
DEFINE VARIABLE cProject  AS CHARACTER          NO-UNDO .
DEFINE VARIABLE oFileInfo AS System.IO.FileInfo NO-UNDO .

DEFINE VARIABLE cDebugList AS CHARACTER NO-UNDO.

ASSIGN cProject  = getProjectName ()
      cFileName = SUBSTRING (pcFileName, 2)

      oFileInfo = NEW System.IO.FileInfo (cFileName)

      cDebugList = /*createLinkedFile (":U, ".p")*/
                  SESSION:TEMP-DIRECTORY + "debuglist-":U + oFileInfo:Name.

COMPILE VALUE (cFileName)
  SAVE = FALSE
  DEBUG-LIST VALUE (cDebugList)
  NO-ERROR .

```

```

openEditor
  (?
  cDebugList,
  "UNTITLED",
  ?)

```

**Function prototype defined
in oeideservice.i**



ABL Scratchpad

- There is finally an ABL scratch pad in 11.2
- But it's a view, not an Editor – so here's my workaround that also works on 10.2B
- Basically creates a copy of an empty file

- Could also create a (dynamic) copy of a file with content

ABL Scratchpad

Customization Editor

OpenEdge Customization Options

Available Extension Points

- Menu / Toolbar Entries
 - Scratch Editor
 - Debug Listing
- Editor Context Menu
- New Jet Templates
- Editor Templates
- Template Overrides
- OpenEdge Custom Projects

Add Remove

Action Details

Name*: Scratch Editor

Accelerator:

Icon: icons/oelogo16.gif

Tooltip:

Program name*: Consultingwerk/Studio/ScratchEditor/scratcheditor.p

Parameters:

Configuration:

Send file name of the current selection

Action appearance

Show on menu Show on toolbar Show on menu and toolbar

Run persistent


```
/* ***** Definitions ***** */

ROUTINE-LEVEL ON ERROR UNDO, THROW.

{adecomm/oeideservice.i}

/* ***** Main Block ***** */

FILE-INFO:FILE-NAME = "Consultingwerk/Studio/ScratchEditor/empty.p":U .

IF FILE-INFO:FULL-PATHNAME > "":U THEN .
ELSE DO:
    MESSAGE "Unable to find scratch editor template empty.p"
        VIEW-AS ALERT-BOX ERROR .

    RETURN .
END.

openEditor
    (? ,
    FILE-INFO:FULL-PATHNAME ,
    "UNTITLED":U ,
    ?) .
```

Agenda

- A (short) Review of OpenEdge Architect
- (Personal) Preferences in OpenEdge Architect
- OpenEdge Editor Macros
- Setting the Author Name used by Templates
- Progress Customization Options
- **JET Templates**
- Installing Plugins for JET in OEA/PDSOE
- Customizing OpenEdge Architect Templates

JET Templates

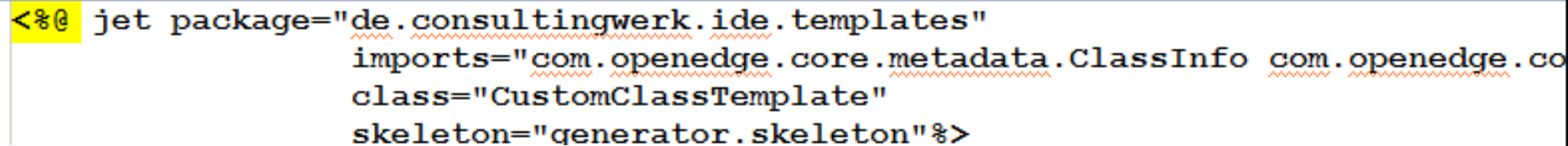
- Java Emitter Templates
- Dynamic Template format
- Text files that are converted into Java source
- Compiled Java classes executed when you create a new file or new block of code
- http://www.eclipse.org/articles/Article-JET/jet_tutorial1.html
- http://www.eclipse.org/articles/Article-JET2/jet_tutorial2.html

JET Templates

- Anyone remembers SpeedScript (Web Speed)?
- It's similar (html + 4GL → pure 4GL → R-Code)
- Templates based on a skeleton file
 - Java file that contains header of generated Java class
- Typically contains import statements (Java version of USING statement)

JET Template

- Text file
- Contains header



```
<%@ jet package="de.consultingwerk.ide.templates"  
    imports="com.openedge.core.metadata.ClassInfo com.openedge.co  
    class="CustomClassTemplate"  
    skeleton="generator.skeleton"%>
```

JET Escape sequences

- Escape sequence for a single Java expression (value)

```
<%= data.getClassName() %>
```

- Escape sequence for a block of Java statements

```
<%  
for (Iterator iter = fields.iterator(); iter.hasNext();)  
{  
    Field field = (Field)  
    iter.next();%><%=OETemplateUtil.generateField(field, NL)%>
```

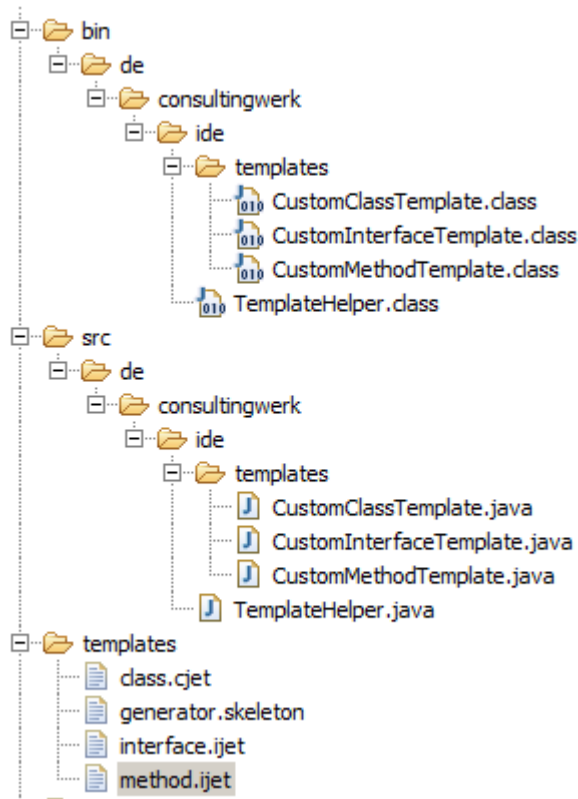
- Can be nested, just like normal Java code

JET Templates

- Jet Templates are executed with an input parameter
- That's the input from the Wizard that executes them
- Data in input parameter dependent on the type of template (class, interface, method, etc.)

Template generation sequence

- Sequence executed whenever source file is modified



OpenEdge Architect Template Customization

JET Template +
generator.skeleton
(Java source code)

Java Source code
.java file

Compiled Java
Class file
.class file

Register in
Customization
Editor

Agenda

- A (short) Review of OpenEdge Architect
- (Personal) Preferences in OpenEdge Architect
- OpenEdge Editor Macros
- Setting the Author Name used by Templates
- Progress Customization Options
- JET Templates
- **Installing Plugins for JET in OEA/PDSOE**
- Customizing OpenEdge Architect Templates

Setting up JET for OpenEdge

- <http://communities.progress.com/pcom/docs/DOC-16387>
- Documentation a bit outdated (10.1B)
- Works with 10.2B with a little tweaking and creativity
- Trivial to use on 11.2
- Use existing templates as a starting point, create copies of files in `DLC\oeide\eclipse\plugins\com.openedge.pdt.text_ version\templates`

Required Plugins

- Writing custom JET Templates requires the following Eclipse Plugins/Frameworks:
 - JDT – Java Development Tools
 - EMF – Eclipse Modeling Framework
- Use version appropriate for your OpenEdge Architect installation ... (Eclipse version used)
- Templates created with OE10.2B work fine in newer versions of PDSOE
- Templates can be used by others without JDT and EMF

Required plugins

- Plugins can be installed into OEA/PDSOE using Software Updates
- PDSOE in 11.2 is based on Eclipse Indigo which is Eclipse 3.7
- PDSEO in 11.0, 11.1 is based on Eclipse Helios which is Eclipse 3.6
- OEA in 10.2B is based on Eclipse Ganymede which is 3.4
- JET and EMF preinstalled in 11.2, only need to install the JET SDK

Available Software

Check the items that you wish to install.



Work with: Indigo - <http://download.eclipse.org/releases/indigo>

Add...

Find more software by working with the "[Available Software Sites](#)" preferences.

JET

| Name | Version |
|--|---------------------------------|
| <input type="checkbox"/> EclipseRT Target Platform Components | |
| <input checked="" type="checkbox"/> Modeling | |
| <input checked="" type="checkbox"/> Java Emitter Templates (JET) SDK | 1.1.1.v201101271243-42186A5N... |

Select All

Deselect All

1 item selected

Details

JET SDK includes JET, JET UI, source code, test code and code examples.

More...

- Show only the latest versions of available software
- Group items by category
- Show only software applicable to target environment
- Contact all update sites during install to find required software
- Hide items that are already installed
- What is [already installed?](#)



< Back

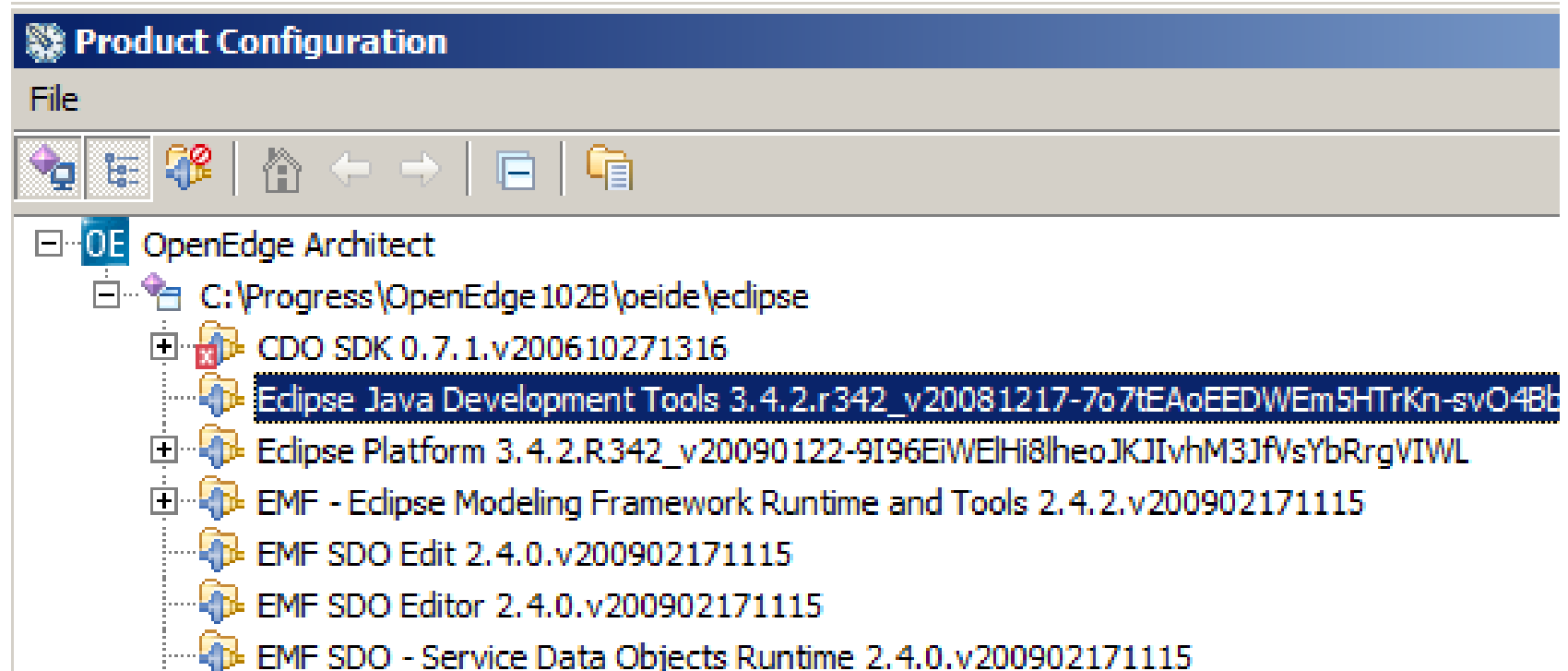
Next >

Finish

Cancel

Eclipse Plugins

- Eclipse Plugins for my 10.2B installation

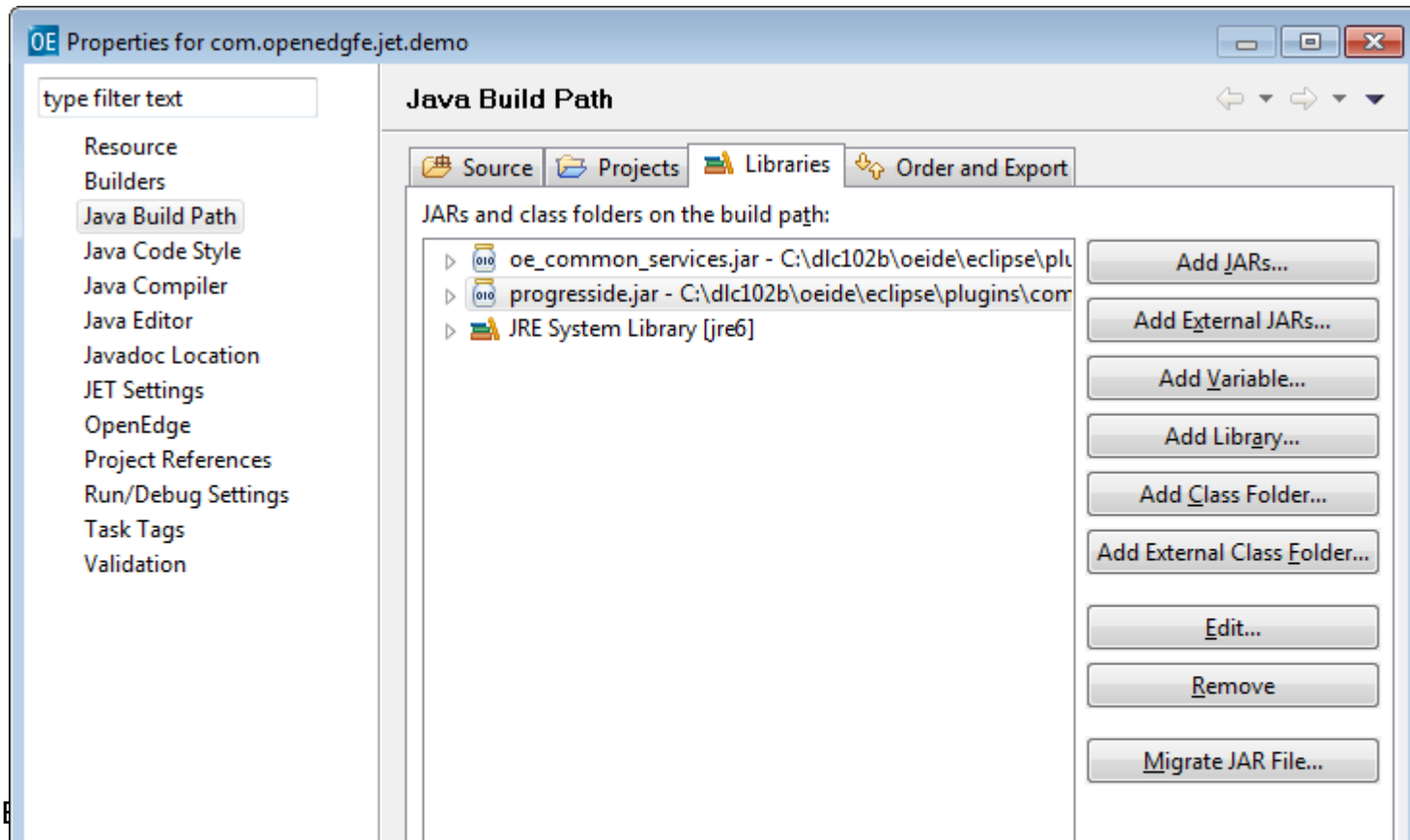


Setting the Java Build Path

- Add the following two external JAR files for OpenEdge 11.2:
- C:\Progress\DeveloperStudio3.7\eclipse\plugins\com.openedge.pdt.core_11.2.1.00\oe_common_services.jar
- C:\Progress\DeveloperStudio3.7\eclipse\plugins\com.openedge.pdt.text_11.2.1.00\progresside.jar

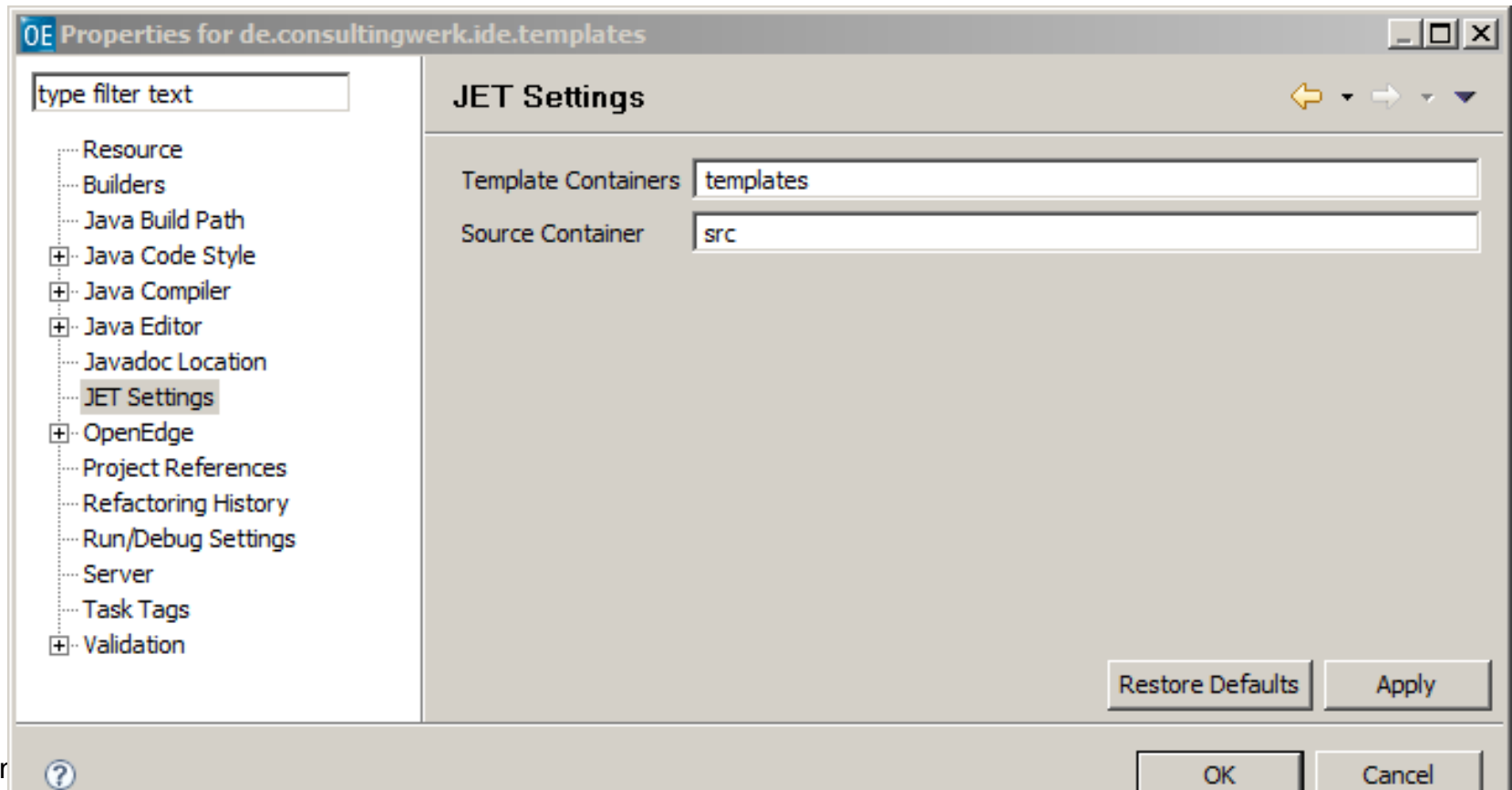
Setting the Java Build Path

- Java Build Path from white paper needs additional .jar file in 10.2B/11.x: **progresside.jar**



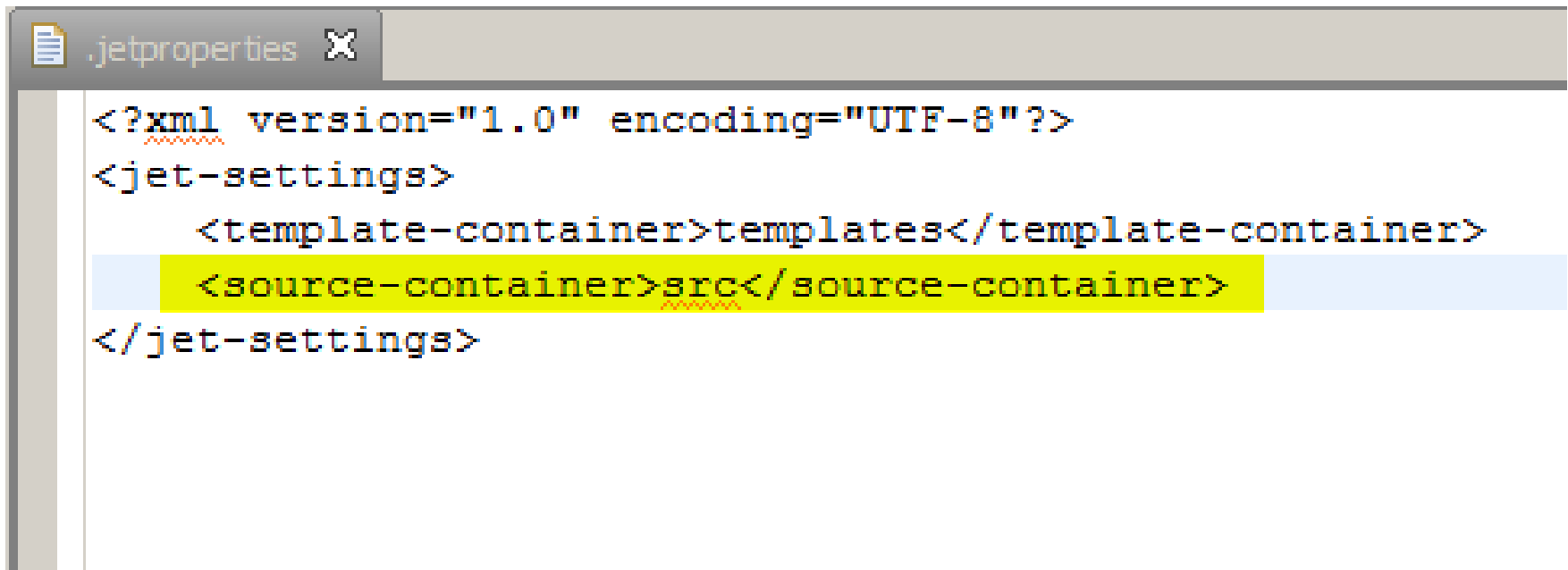
Editing .jetproperties

- In 10.2B with the plugins installed the JET properties are part of the project properties



Alternatively editing .jetproperties file

- Text/XML file in project root
- Change source container setting to: src
- Restart PDSOE when done

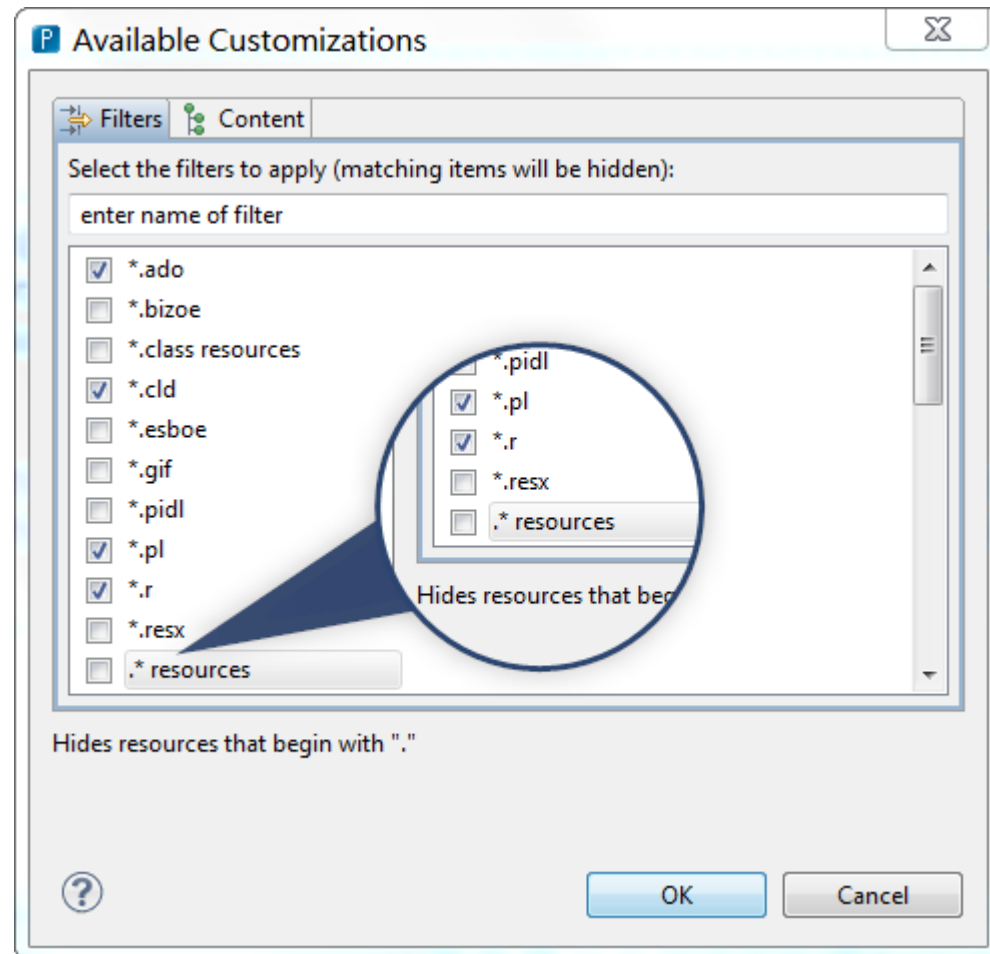
A screenshot of a text editor window titled ".jetproperties" with a close button (X). The editor displays XML code for the .jetproperties file. The code is as follows:

```
<?xml version="1.0" encoding="UTF-8"?>
<jet-settings>
  <template-container>templates</template-container>
  <source-container>src</source-container>
</jet-settings>
```

The line containing the source container setting is highlighted in yellow.

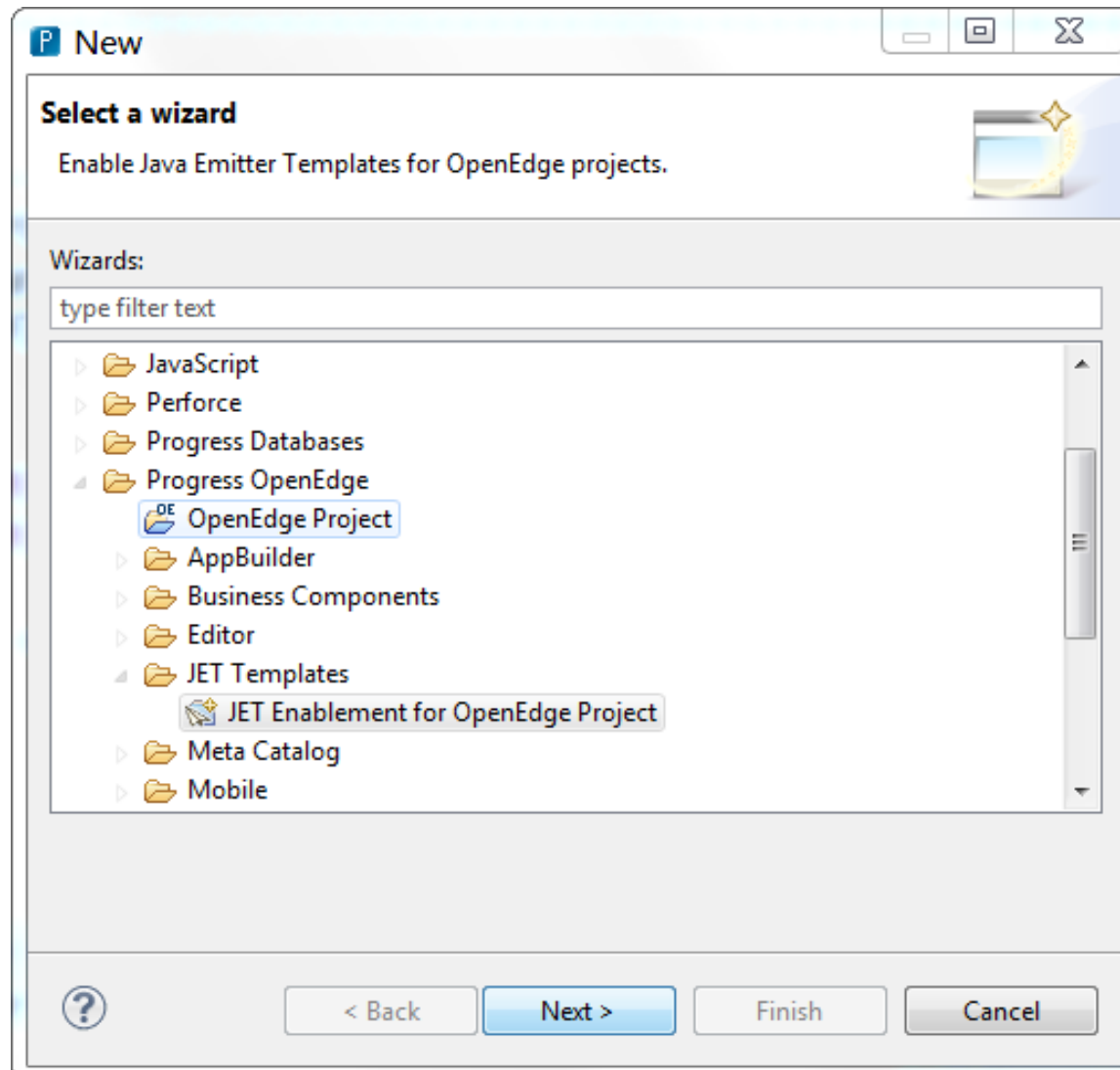
Alternatively editing .jetproperties file

- . resources are hidden in the resource view by default
- Resource view context menu -> Customize View



Enable JET for OpenEdge Project

- File -> New



Agenda

- A (short) Review of OpenEdge Architect
- (Personal) Preferences in OpenEdge Architect
- OpenEdge Editor Macros
- Setting the Author Name used by Templates
- Progress Customization Options
- JET Templates
- Installing Plugins for JET in OEA/PDSOE
- Customizing OpenEdge Architect Templates

Customizing Templates for OEA/PDSOE

- OEA/PDSOE templates based on JET
- Overriding existing templates for new files, e.g. modifying the file header comment
- Overriding existing templates for new code blocks, e.g. new internal procedure wizard, new method, new property
- Additional new file templates
 - Currently only supported for .p file extension (functional limitation)

Customizing Templates for OEA/PDSOE

- Typically custom templates based on Progress supplied templates
 - C:\Progress\DeveloperStudio3.7\eclipse\plugins\com.openedge.pdt.text_11.2.1.00\templates
 - C:\Progress\OpenEdge102B\oeide\eclipse\plugins\com.openedge.pdt.text_10.2.1.06\templates
- Contains also the skeleton file

OpenEdge Architect Templates

| Name | Änderungsdatum | Typ |
|-------------------------------|------------------|----------------|
| abfunction.ijet | 19.03.2012 21:44 | IJET-Datei |
| abfunctionproto.ijet | 19.03.2012 21:44 | IJET-Datei |
| abprocedure.ijet | 19.03.2012 21:44 | IJET-Datei |
| annotation.ijet | 19.03.2012 21:44 | IJET-Datei |
| class.cjet | 19.03.2012 21:44 | CJET-Datei |
| constructor.ijet | 19.03.2012 21:44 | IJET-Datei |
| custominclude.ijet | 19.03.2012 21:44 | IJET-Datei |
| CustomInclude.template | 19.03.2012 21:44 | TEMPLATE-Datei |
| customprocedure.pjet | 19.03.2012 21:44 | PJET-Datei |
| CustomProcedure.template | 19.03.2012 21:44 | TEMPLATE-Datei |
| destructor.ijet | 19.03.2012 21:44 | IJET-Datei |
| event.ijet | 19.03.2012 21:44 | IJET-Datei |
| field.ijet | 19.03.2012 21:44 | IJET-Datei |
| function.ijet | 19.03.2012 21:44 | IJET-Datei |
| functionproto.ijet | 19.03.2012 21:44 | IJET-Datei |
| generator.skeleton | 19.03.2012 21:44 | SKELETON-Datei |
| interface.ijet | 19.03.2012 21:44 | IJET-Datei |
| method.ijet | 19.03.2012 21:44 | IJET-Datei |
| NewProcedureTemplate.template | 19.03.2012 21:44 | TEMPLATE-Datei |

Modifying templates

- Optionally create custom skeleton file, that provides standard includes etc.
- Set custom class name (template name) in `<%@ header`
- Set custom package name in the `<%@ header`
- Start writing template 😊

```
<%@ jet package="de.consultingwerk.ide.templates"
      imports="com.openedge.core.metadata.ClassInfo com.opened
      class="CustomClassTemplate"
      skeleton="generator.skeleton"%>
```

```
<%
ClassInfo data = (ClassInfo) argument.getObj("wizardinfo");
```

```
Set events = data.getEvents();
List methods = data.getMethods();
Set properties = data.getProperties();
Set fields = data.getFields();
Set constructors = data.getConstructors();
Destructor destructor = data.getDestructor(
boolean ldAtBeginning = true;
boolean ldAtEnd = true;
boolean lIsEnum = (data.getSuperClassName().equals("Consultingwerk.Enumerated"));
```

Non-escaped text will just show up in the template

```
%>
/*****
 * Copyright (C) 2006-2013 by Consultingwerk Ltd. ("CW") -
 * www.consultingwerk.de and other contributors as listed
 * below. All Rights Reserved.
 *
 * Software is distributed on an "AS IS", WITHOUT WARRANTY OF ANY
 * KIND, either express or implied.
 *
 * Contributors:
 *
 *****/
```

Sample „Enum“ template

- Based on the class template
- Generate additional code based on Super-Class

```

<%
  ClassInfo data = (ClassInfo) argument.getObj("wizardinfo");

  Set events = data.getEvents();
  List methods = data.getMethods();
  Set properties = data.getProperties();
  Set fields = data.getFields();
  Set constructors = data.getConstructors();
  Destructor destructor = data.getDestructor();
  boolean ldAtBeginning = true;
  boolean ldAtEnd = true;
  boolean lIsEnum = (data.getSuperClassName().equals("Consultingwerk.Enum"));
%>

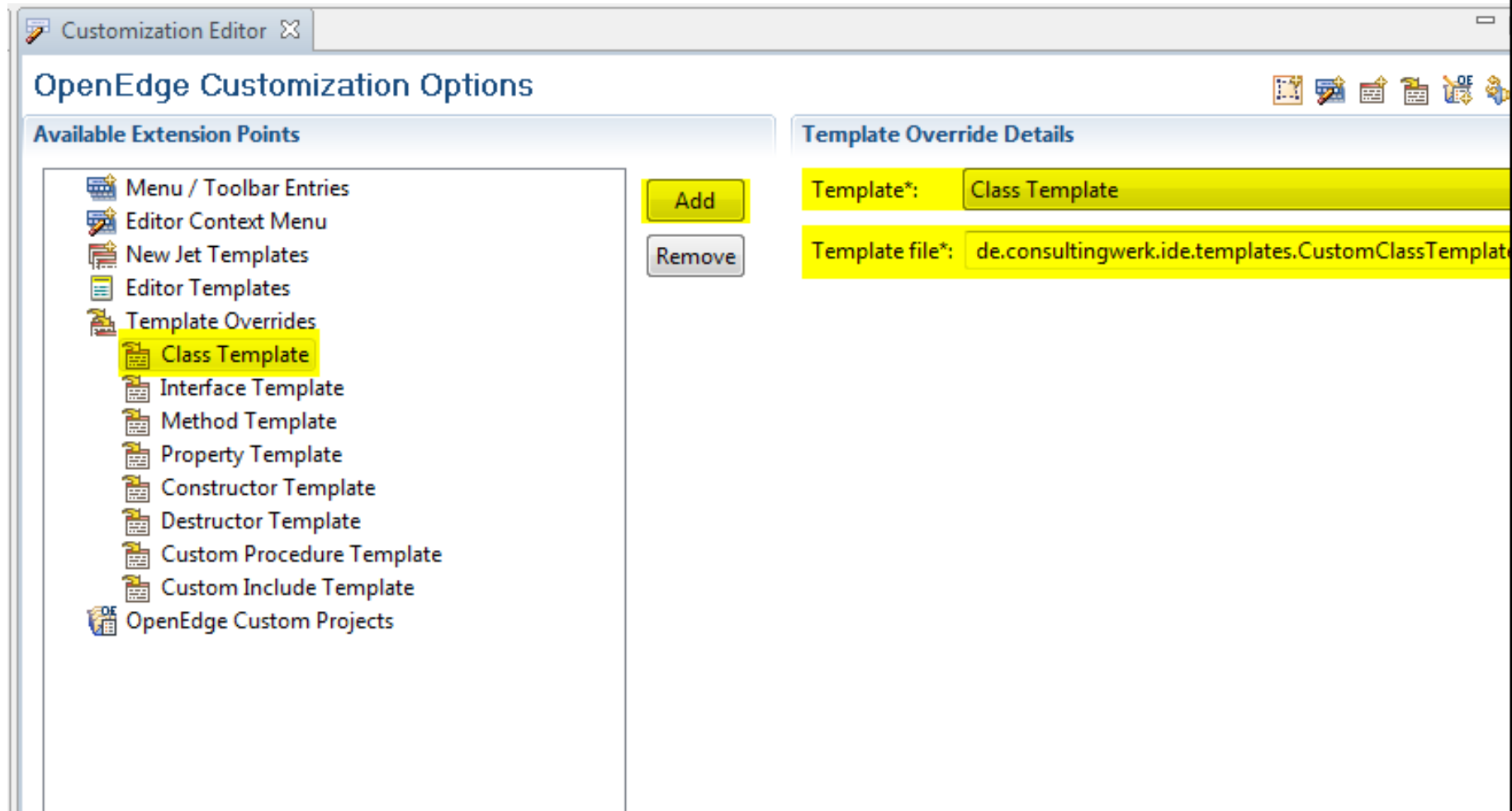
```

```

<%= lIsEnum ? " {Consultingwerk/EnumMember.i FirstValue 0 " + data.getClassName() + "}"
<%= lIsEnum ? " " + NL : "" %><%= lIsEnum ? " /*-----

```

Registering your custom templates



Demo

- Template customization environment
- Customized method template
- Customized new class template
- Review Java functions
- Review code in JET Template that checks for class properties
- Review usage of custom Templates in OpenEdge Architect

Customization settings

- Settings are persisted per OEA/PDSOE installation, not per workspace
- No need to re-customize in every workspace!
- When registering custom templates, they need to be made available in every workspace
 - Path to custom templates is set in the workspace (see later)

OpenEdge Editor - Progress Developer Studio

File Edit Navigate Search Project Extensibility Run OpenEdge Window Help

Project Explorer

MyProject
Procedure Libraries

New ABL Class

Create a user-defined class

Enter a name for the class. Do not use spaces or special characters.

Package root: \MyProject

Package:

Class name: NewClass

Modifiers: Final Abstract Widget pool

Inherits:

Error



Template File: "de.consultingwerk.ide.templates.CustomClassTemplate" could not be found.

OK

Specify the return value for generated methods:

Template binary location in Preferences

The screenshot shows the 'Preferences' dialog box with the 'Customization' tab selected. The left sidebar lists various categories, with 'Progress OpenEdge' and its sub-category 'Customization' highlighted. The main area shows the 'Customization plugin Id' as 'com.openedge.pdt.extensibility.user'. Under 'Template search locations', the checkbox 'All open project directories' is checked. The 'Template folder' field contains the path 'C:\Work\SmartComponents4NET\Trunk\de.consultingwerk.ide.templates\bin', which is highlighted in yellow. A circular callout bubble points to the 'templates\bin' part of the path. A 'Browse...' button is visible to the right of the path field.

P Preferences

type filter text

- General
- Atlassian Connector
- Consultingwerk
- Help
- Install/Update
- Java
- JavaScript
- Json Editor
- Mylyn
- Progress Customer Supp
- Progress Databases
- Progress OpenEdge**
 - Advanced**
 - Class Cache
 - Customization**
 - Launching
 - Parsing
- Database Connectio
- Debug
- Editor
- Meta Catalog
- Server
- Shared AVM

Customization

Customization plugin Id:

Template search locations

- All open project directories

Template folder:

Using templates on other workspaces

- Just provide the contents of your bin folder
- I prefer the SCM tool for that

More info...

- Getting started videos

<http://communities.progress.com/pcom/docs/DOC-101140>

- Top OpenEdge Architect FAQ, Sunil Belgaonkar

<http://communities.progress.com/pcom/community/psdn/exchange/trackprod6>

- Consultingwerk blog – openededge-architect tag

<http://blog.consultingwerk.de/consultingwerkblog/tag/openedge-architect/>

Questions



Thank you!